



May 2016

Infinity News

SPRING & SUMMER TIME BALING

In the 19th century, baling was done by the hands of the farmers; but we have come a long way since those days. In 1936, Innes had invented the first automatic baler that tied up the bales with twine type knotter from a John Deere grain binder, later to be improved in 1939. Still these days are as important as ever as our crops depend on a reliable machine to successfully & efficiently compress cut & raked crops.

Round Balers are the most commonly used Balers, they produce a round or rolled bale. Crops are rolled inside using the rubberized belts or fixed rollers, possibly a combination of both. This quick method of baling allows our farmers to store these bales for many different uses. When the belts go down inside the balers, we can have prefabricated belts kept on file for your specs along with belt & fastener types; special orders may vary on belts/fasteners used.

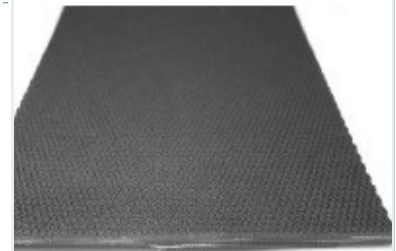
We have conveyor belting available for all round baler manufacturers from Mini Rough top, Continuous Chevron, Diamond Top just to name off hand. We service onsite or in shop orders for shipping, just contact the office for your preference with your quote.

FASTENERS FOR OUR BELTING

We have different styles of Fasteners available that work the best with our belting.

Three of the most common used are the Clipper Hooks, Staple Lacing & Rivet Lacing (Flexco Mechanical Fasteners available from stock). Mato lacing is also available to us, but does come as a Special Order Only. We have Hot Vulcanized endless belts as an option, but is available upon request at time of our orders placed.

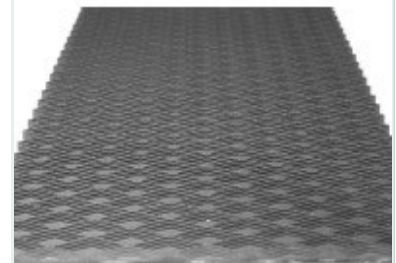
Contacting our office for a quote is the best way of our Sales Specialists to help refer you to the best possible product for you machinery.



MINI ROUGHTOP



CONTINUOUS CHEVRON



DIAMOND TOP

SPECIAL POINTS OF INTEREST

- Baler Belts
- Flexco Fasteners
- Natural Gum Rubber
- Urethane Chute/Wear Liners
- Upcoming Events





FLEXCO FASTENERS— A D.I.Y OPTION

Infinity Belting Ltd. Can provide made-to-order Conveyor Belt Assemblies to a customer's exact specifications. The conveyor belting would be provided as per the requested conveyor belt style, width & length.

The conveyor belt assembly would then have pre-drilled holes for the FLEXCO Plate Fasteners that would be provided (available in steel, mega-alloy or rubber covered) for installation by the customer on site.

By utilizing this type of belt construction, the costs normally associated with lost production (downtime and the cost of having a splice crew hot vulcanize a belt on-site) are effectively minimized.

Also, with this type of belt construction, our Finger Scraper is still capable of effectively cleaning the conveyor belt surface versus a standard belt scraper that would need to be backed off, allowing for carry back to build up and causing potential safety hazards.

Key Concepts of this Product:

- Pre-Cut to size belt assemblies
- Holes pre-tapped for plate fasteners
- Fasteners available in steel or rubber construction
- Economical option to the expense of having conveyor belting hot vulcanized
- Can use Finger scraper on either style of plate fasteners.

“By utilizing this type of belt construction, the costs normally associated with lost production are effectively minimized.”

NATURAL GUM RUBBER



WHY USE A NATURAL GUM RUBBER?

NATURAL GUM RUBBER SLEEVES, ALSO KNOWN AS ELEPHANT TRUNKS, FOR USE IN BULK UNLOADING FACILITIES OFFER:

- SUPERIOR ABRASION AND TEAR RESISTANCE AS WELL
- HIGH TENSILE STRENGTH OVER OTHER RUBBER COMPOUNDS
- MAINTAINS IT'S FLEXIBILITY AT LOW TEMPERATURES

INFINITY BELTING OFFERS NATURAL GUM RUBBER SLEEVES THAT ARE:

- MADE-TO-ORDER (TO OUR CUSTOMERS SPECIFICATIONS)
- SEEMED SLEEVES ARE CREATED BY COLD SPLICING FLAT SHEET STOCK INTO THE DESIRED SLEEVE CONFIGURATION

➤ SEEMLESS SLEEVES ARE CONSTRUCTED ON A MANDREL (WITH THIS OPTION THERE ARE SIZE LIMITATIONS)

OUR NATURAL GUM RUBBER, IN SHEET FORM, CAN ALSO BE UTILIZED FOR:

- CONVEYOR SLOW DOWN BELTS
- CONVEYOR BELT SCRAPERS
- FLASHING RUBBER
- CHUTE LINING
- TANK LINERS
- MATERIAL HANDLING HOSES
- SQUEEGEES
- PIPE WIPERS



Urethane Chute Liners & Wear Products

OUR URETHANE CHUTE & WEAR LINER PRODUCTS

Available Constructions:

Non-Reinforced — No Backing. Most lightweight and flexible of all the Diamondbacks®. It can be hand formed. A special adhesive allows gluing to metal and other materials

Cotton Fabric — Lightweight, flexible and allows Diamondback® to be glued to metal and other materials with commercial adhesives. Expanded.

Metal — Flattened, expanded steel, typically 16 gauge. Makes Diamondback® more rigid and flatter when installed. Decreased the amount of thermal expansion/contraction. Metal backing provides a structurally sound “stopping point” for bolt heads, so the bolt cannot pull entirely through the sheet.

Custom — Specialty fabrics and light or heavy gauge solid steel.

Additional options available:

Weldable Diamondback® - Weldable metal plates on the bottom surface of Diamondback® sheets allow the sheet to be welded to steel.

Molded-in Bolts—Custom made per your specifications.

Molded-in Inserts with Holes—Per your specifications.

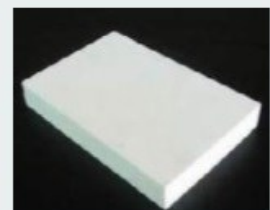
Specialty Adhesives—For gluing Diamondback® and cotton fabric-backed Diamondback®.

CUMI Industrial Ceramics are used as wear resistant components, as well as liners and grinding media (also for engineered ceramics) and are available in plain or honeycomb as well as weldable configurations.

The high alumina content that is used in CUMI ceramics along with their ability to produce superior technically advanced products at a reasonable cost ensures that the highest quality products are always supplied to our client partners.

CUMI Ceramic products are utilized in industries such as: coal wash plants, ceramic tile, power distribution equipment, power generation, cement and fluid handling.

CUMI also supplies Super Refractory materials. These products are made where heat resistance and quality containment products are required. In application with extreme temperature, where superior product are needed, CUMI offers Bonded or Shaped refractories as well as Monolithic or Powdered Refractories. These Super refractory products are designed for use in high temperature application that are found ceramic, non-ferrous, cement, iron & steel, fertilizer, carbon black, glass and chemical processing industries.



Do you have an upcoming event that we could help with or promote?

Contact: Dana Satz

danas@infinitybelting.com

NEW

ADVERTISE HERE!

Infinity Belting Ltd.

#107—951 Boulder Blvd.

Phone: 780-963-3084

Toll Free: 1-855-963-3084

Fax: 780-963-3214

E-mail: info@infinitybelting.com



UPCOMING EVENTS :



Team Infinity Oil City Slow Pitch

- From April—November 2016 stay tuned to our Facebook page & Instagram on Tournaments we may be hosting for various registered charities!
- Looking to enter a team? Contact Dennis in our office for more info!

PAST EVENTS:



Bust A Move 2016

- March 19, 2016 was Edmonton's Bust a Move which our team Infina-Titties had the privilege being a part of. Our team was able to raise \$2890.00 to go towards the Alberta Cancer Foundation's Breast Cancer Unit. To learn more, see bustamove.ca under the Edmonton tab.



Family Movie Night

- February 20, 2016 we hosted a fun filled night at the movies thanks to Castledowns Baptist Church for the use of their auditorium. We were able to raise funds to put towards 2 projects: Honduras Feeding Centers & the Philippines Birthing Clinic. Food & supplies are being purchased with the funds.